



Visualiner 3-D Image Aligner™

Parts Reference -

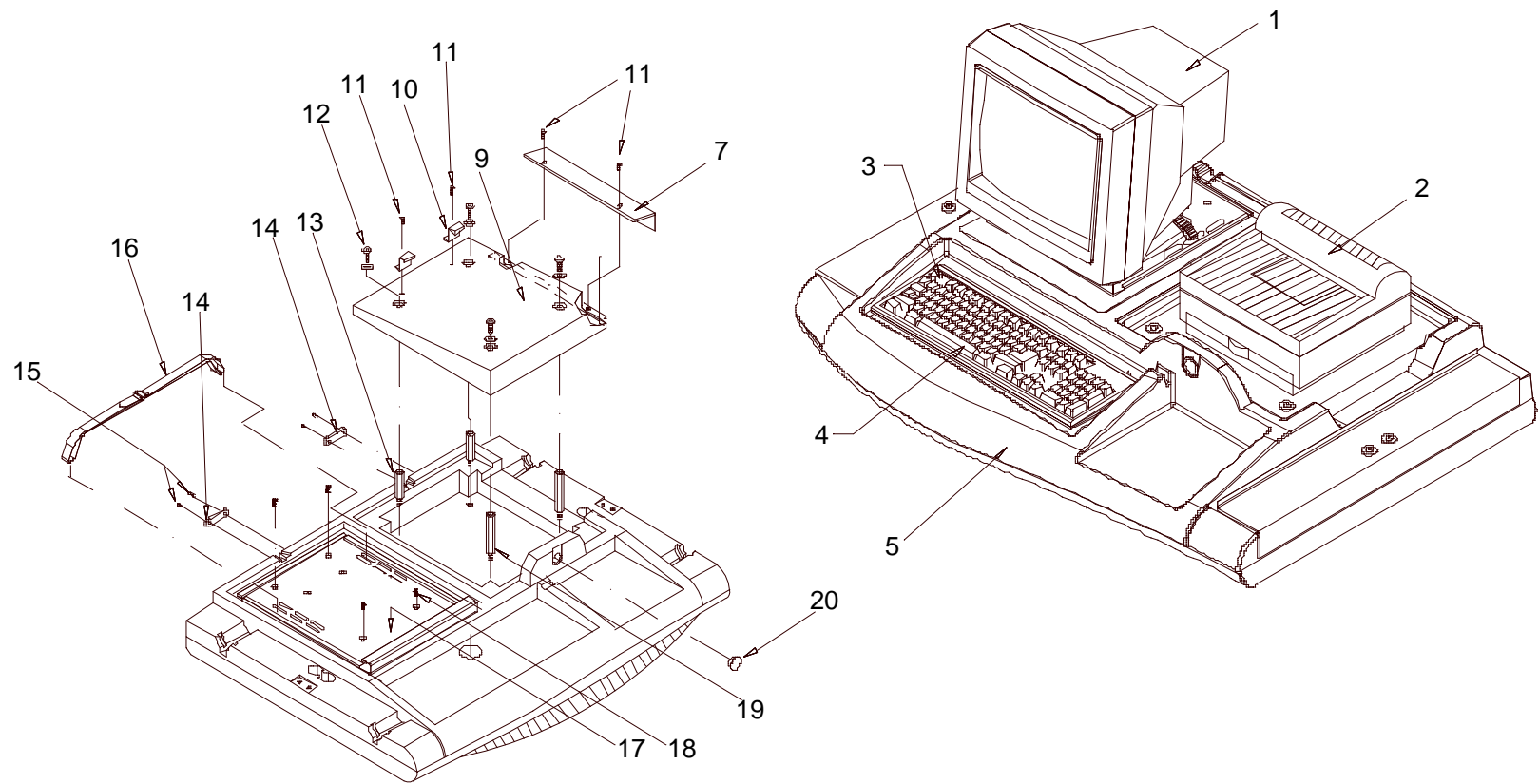
Version 2 System

Pro32™

UPPER CONSOLE SHELF, CRT, PRINTER - V3D (00088587000)

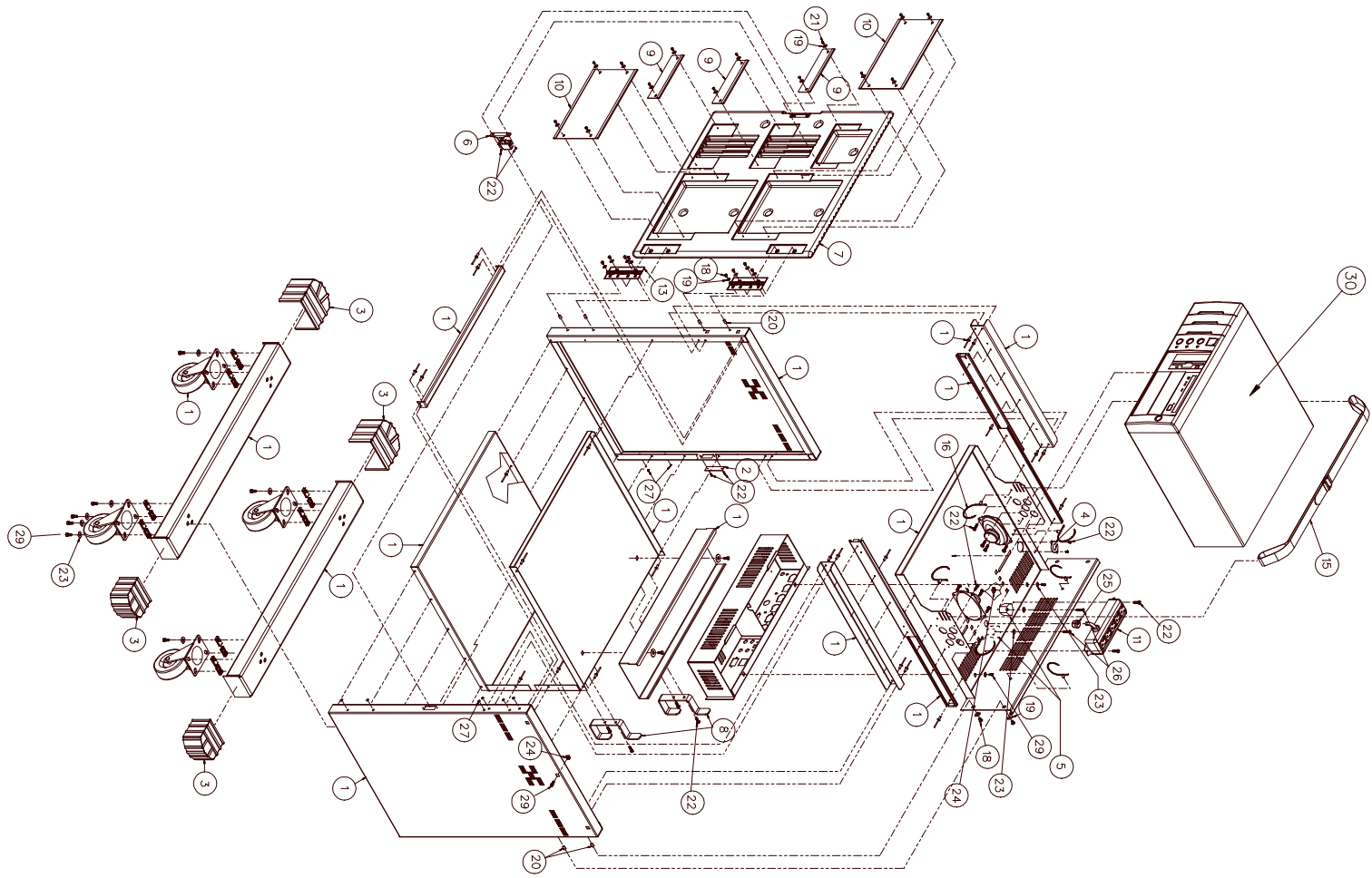
REF	PART #	DESCRIPTION	REF	PART #	DESCRIPTION
1	00088276000	Monitor, 17"	15	01122289000	Screw - #8-18 x 1/2" STPH
*	00089169000	Monitor, 19" (Optional)	16	01122312000	Strap – Cinch, 24"
2	EAE0050L20A	Printer – LED, Okidata OL10e	17	00088145000	Clamp – CRT, V3D
	EAK0222J02A	Printer – LED, Okidata OL10e KIT	18	01101835000	Screw – 1/4 - 20, FHPS
*	00089173000	Color Printer Kit (Optional)	19	01122367000	Standoff, 1/2" Hex, 1/4 -20 x 2 1/2"
3	00088716000	Cap Cover Set – V3D (Decals)	20	01122362000	Plug – Hole, 1 1/4" Dia., Black
4	00085569000	Keyboard, Std 104 Key	NS	00088910000	Paper – Laser, sheet 500 ct.
NS	00089284000	Seijen keyboard cover	NS	00083055000	Cable – Data, Printer
NS	00088717000	Keyboard Assy., V3D w. Decals	NS	0528109201	Toner Cartridge – Okidata ol600e
NS	00088716000	Decal- Keyboard, Function Keys	NS	01122599000	Black cartridge Lexmark printer
5	00088147000	Shelf – Top, V3D	NS	01122600000	Color cartridge Lexmark printer
9	00089174000	Stand – Printer, V3D	NS	05281091010	Image Drum, Okidata ol600e
10	00088586000	Bracket – Printer Stop, Rear	NS	00088197000	Remote Receiver Assm.
11	01122049000	Screw - #6-32 x 3/8" Black PHST	NS	00088690000	Remote Controller
13	01122368000	Standoff, 1/2" Hex, 1/4 -20 x 1 1/2"	*		Remote Controller Decal Kit
14	00088152000	Restraint – Cable	NS	0008917600x	V3DPro32™ CD.

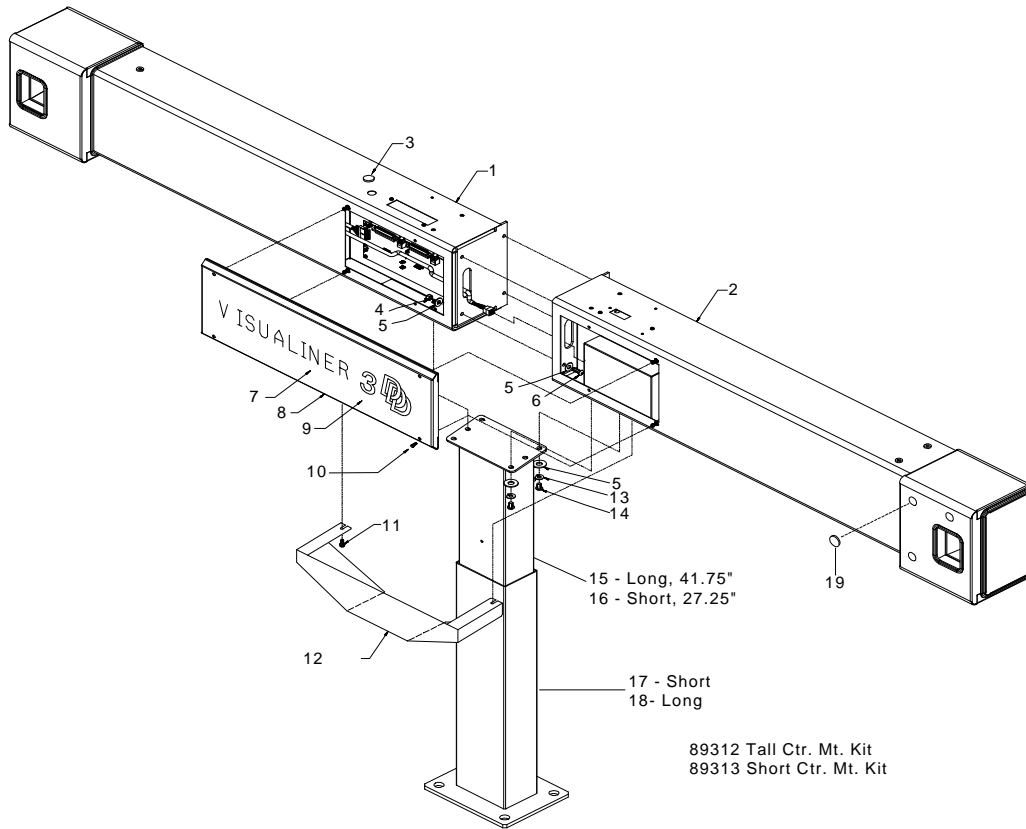
* Not Available Separately, must get complete assembly – 00088690000



LOWER CABINET ASSEMBLY (00088629000)

REF	PART #	DESCRIPTION	REF	PART #	DESCRIPTION
1	00088194000	Assembly – Lower Cabinet	21	01122289000	Screw - #8-18 x ½” STPH
2	00088176000	Plate – Plastic Cover	22	01101883000	Screw – Self Tap #8-32 x 3/8” HW
3	00088619000	Scuff Guard – V3D	23	01101930000	Washer – Flat, ¼” Black Oxide
5	00088173000	Cam Lock – PC	24	01101802000	Nut – Tinnermann, ¼-20
6	00088161000	Catch – Door, V9	25	01122315000	Bushing – Open / Closed #2873
7	00088345000	Door – V9	26	01101882000	Screw – PHMS, ¼-20 x 1½”
NS	00088167000	John Bean Door Insert (Part of 88345)	27	01122286000	Hole Plug – HEYCO #2603
8	00084269000	Bracket, Hook (cable hangers)	29	01177999000	Screw – Self Tap, ¼ - 20 x ¾”
9	00088164000	Panel – Door, Small	30	00089502000	ATX PC Assembly, V3D,Pro32™ W/O network.
10	00088163000	Panel – Door, Large		0008969400	ATX PC Assembly, V3D,Pro32™ with network
11	00088624000	Strip – Power, International		00089142000	AT PC Assy' V3D Pro 32™ with network
13	00063740000	Hinge - Continuous, Cut (5”)	NS	00088635000	Power Cord – IEC-301
15	01122285000	Strap – Cinch, 48” long	NS	00088636000	Cable Assy, Power
16	01122314000	Tie Wrap – Push Button	NS	00088583000	Bracket, Target Hanger, Right
18	01101467000	Screw – BHCS - #10-24 x ½” HS	NS	00088584000	Bracket, Target Hanger, Left
19	00061746000	Washer – Tray, Weight	NS	00999692000	Grommet, Extruded
20	00060385000	Nutsert - #10-24			

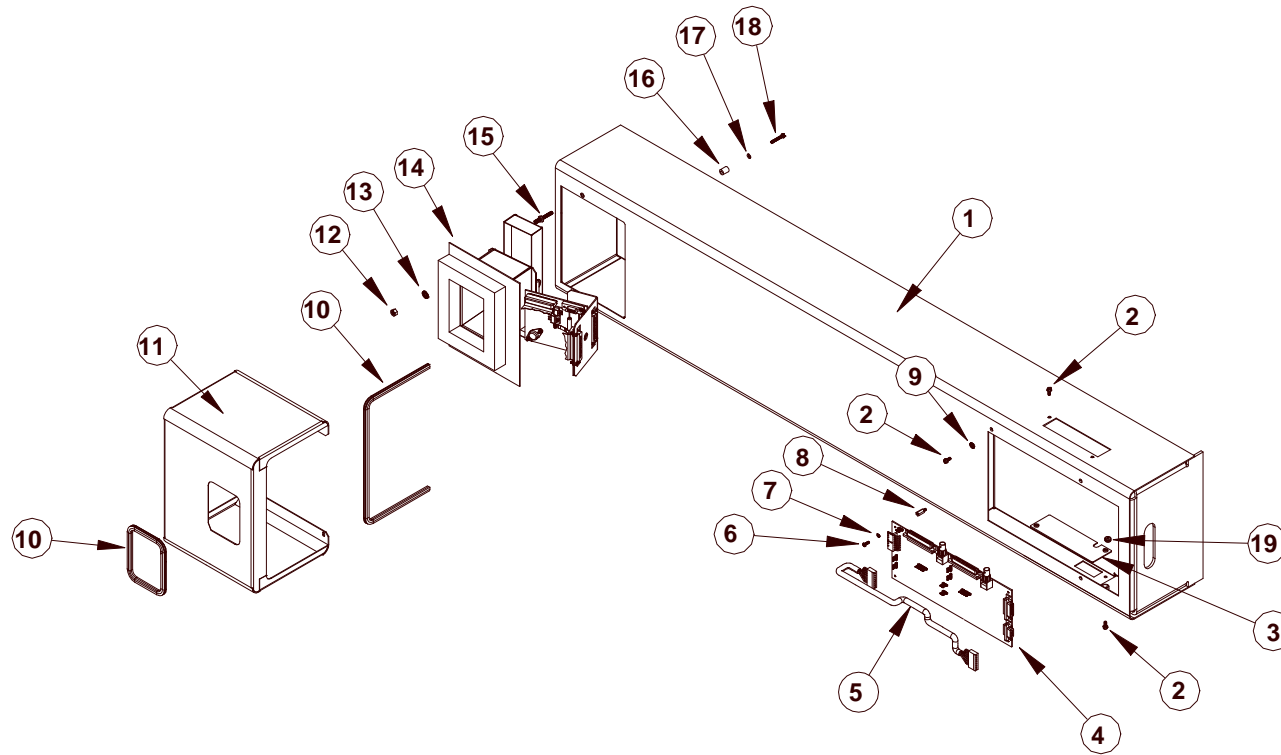




89312 Tall Ctr. Mt. Kit
89313 Short Ctr. Mt. Kit

Center Post Boom Mount

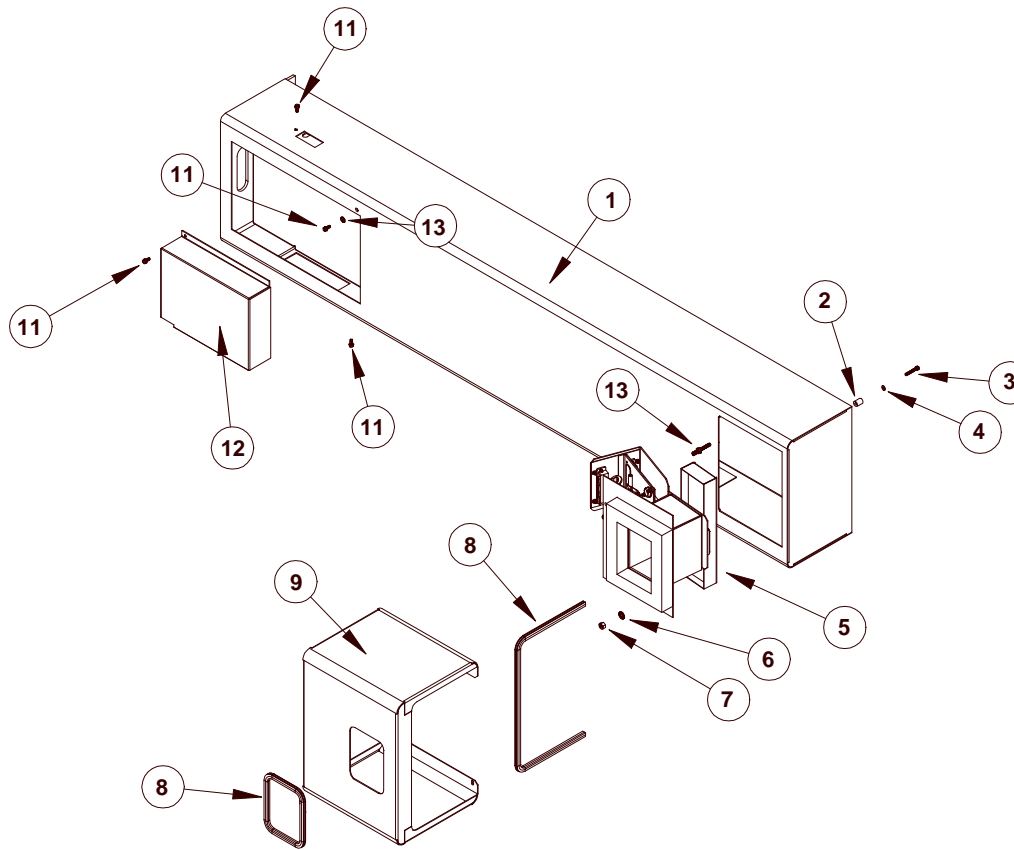
REF	PART #	DESCRIPTION	REF	PART #	DESCRIPTION
1	00089330000	Camera Beam Assy, LH	12	00089256000	Cosmetic Yoke – Camera Beam
2	00089331000	Camera Beam Assy, RH	13	01100242000	Lock Washer, Spring
3	01122409000	Plug, Pry Out, .75 Dia.	14	01187798000	Screw–BHSOC HCS, 5/16 – 18x1
4	01101804000	Nut Stop, 5/16 – 18 Nylock	15	00089308000	Tall Support Column 41.75"
5	01107382000	Washer-Flat, 5/16 1/16x11/32	16	00089307000	Short Support Column 27.25"
6	01177126000		17	00088558000	Support Base Short
7	00089318000	Decal Visualiner, 2 x 18	18	00088559000	Support Base Long
8	00082600000	Cover Front Center	19	01122319000	Plug – Hole, Dome Snap IN411
9	00088790000	Decal-3D Camera Beam		00089310000	Tall Dual post kit
10	01122254000	Plughole, IR Head Cover		00089311000	Short Dual post kit
11	01101883000	Screw-Self Tap 8-32 x 3/8 HW		00089312000	Tall single post kit
				00089313000	Short single post kit



89330 – LH Camera Beam Assembly, 2 - Piece

REF	PART #	DESCRIPTION
1	00089245000	Camera Beam
2	01101883000	Screw-HJW, 8-32x3/8"
3	00089247000	Plate- Hole cover
4	00088569000	PCB – Camera Hub
5	00089629000	Cable Assy, Power
6	01122605000	Screw-PMS, 6-32x3/8" blk
7	01101697000	Washer-lock Int. Tooth #6
8	01122608000	Standoff – 6-32x1/2"
9	01101583000	Washer-lock Ext. Tooth #8
10	01122245000	Strip – Grommet , Rubber
*	00086465000	Warning Label

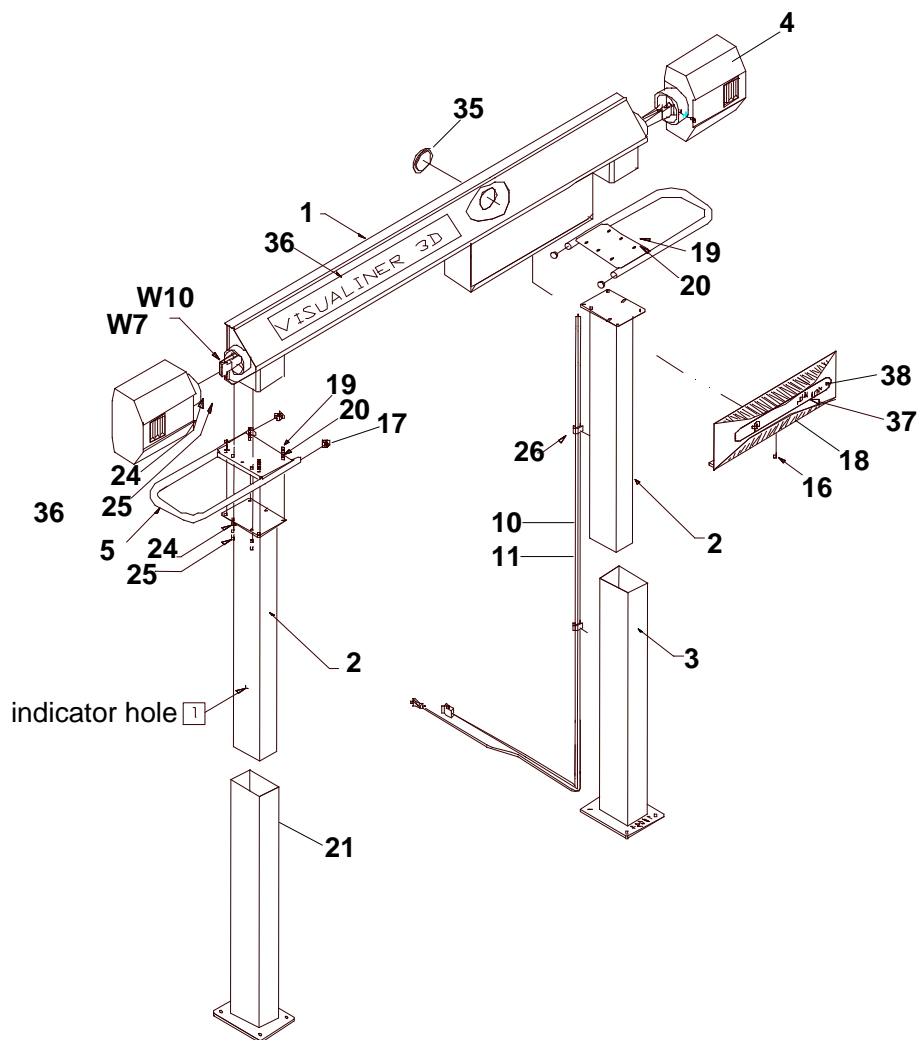
REF	PART #	DESCRIPTION
11	00089259000	Cover – Camera Beam
12	00089242000	Nut – ¼-28
13	01187612000	Washer – Lock ¼"
14	00089304000	Camera Array Assy'
15	00089243000	Screw – Camera Box Mount
16	01122615000	Spacer, Nylon
17	00061746000	Washer
18	01122106000	Screw – BHCS, 8-32x1"
19	01122288000	Grommet 3/8 OD x 5/32" ID
*	00088574000	Cable Assy' Video Co-AX
*	00088576000	Cable Assy' Pod Control (Data)
*	00088571000	Cable Assy, Umbilical



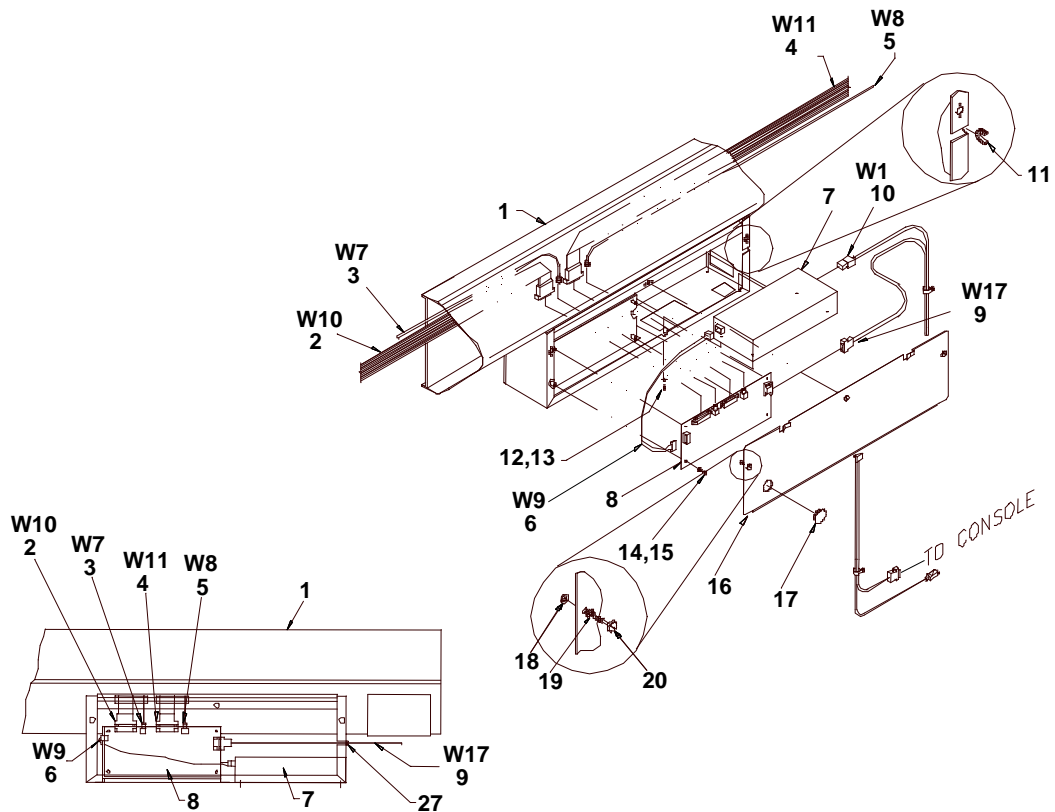
89331 - RH Camera Beam Assembly, 2 - Piece

REF	PART #	DESCRIPTION	REF	PART #	DESCRIPTION
1	00089245000	Camera Beam	9	00088259000	Cover – Camera Beam
2	01122615000	Spacer, Nylon	10	00089243000	Screw, Camera Mount
3	01122106000	Screw – BHCS, 8 – 32 x 3/8"	11	01101883000	Screw – HHW, 8-32 x 3/8"
4	00061476000	Washer	12	00089309000	Power Supply
5	00089304000	Camera – Array Assmebly	13	01101583000	Washer-Lock, Ext tooth #8
6	01187612000	Washer – Lock 1/4"	*	00086465000	Label-Warning, Shock
7	00089242000	Nut, 1/4 - 28 NF	*	00088576000	Cable Assy., Pod Control (Data)
8	01122245000	Strip – Grommet, Rubber	*	00088574000	Cable Assy., Video Co-ax

Camera Beam, Supports

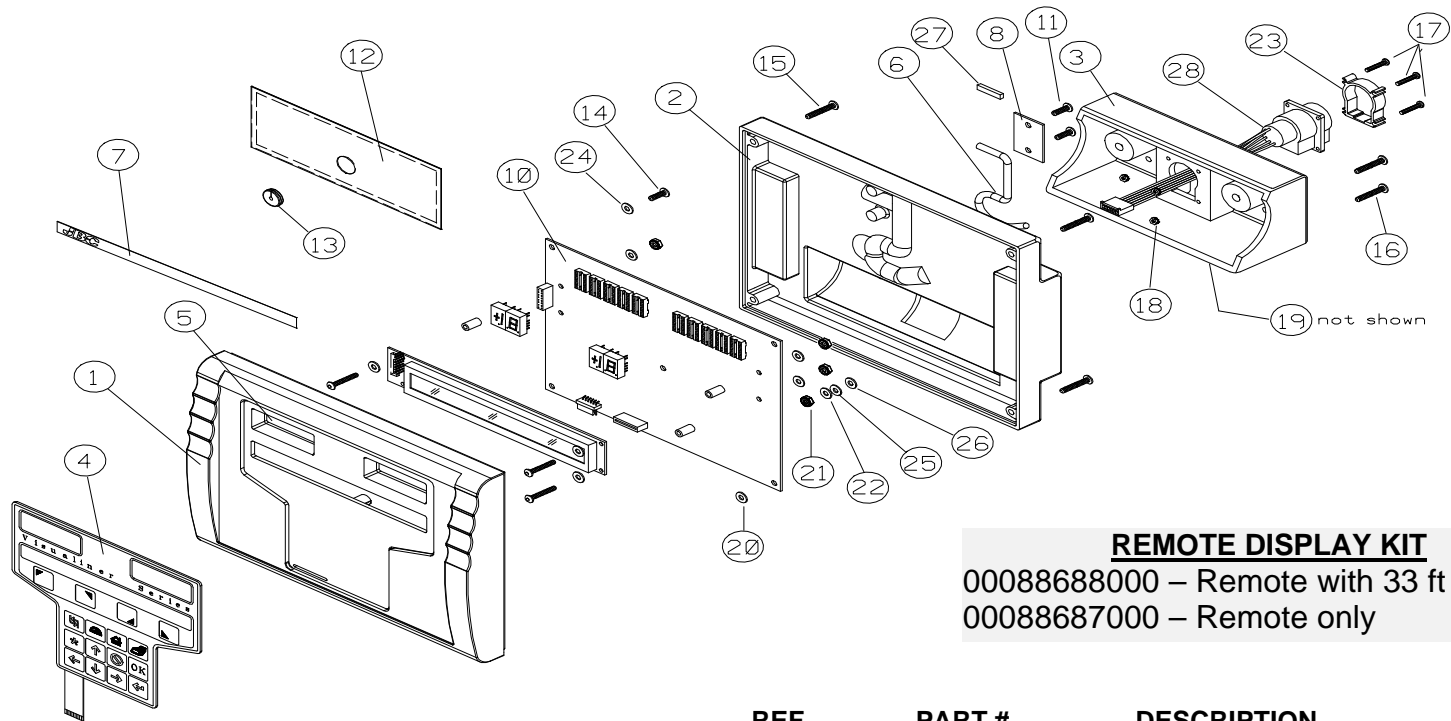


REF	PART #	DESCRIPTION	REF	PART #	DESCRIPTION
1	00088562000	Beam Weldment – Camera	10	00088571000	Cable Assy – Console.UMB, W17
2	00088564000	Column – Support, Long	11	00088872000	Cable – Power, Camera Beam
NS	00088563000	Column – Support, Short	12	01187612000	Washer – Lock, Int/Ext, ¼”
3	00088559000	Support – Base, Long	13	01101575000	Screw – BHCS, ¼-20 x ¾”
NS	00088558000	Support – Base, Short	14	00088789000	Decal – Visualiner, Camera Beam
4	00088565000	Camera Pod Assembly	15	01122382000	Plug – Hole, Blk. Plastic, 4”
5	00088566000	Guard, Pod – Single bar, 1 ea.	16	01101737000	Screw – PHMS, #6-32 x ¾”
NS	00088909000	Kit, Guard, Pod – pit, w. hardware	17	00088167000	Decal – 3D, John Bean
6	01102344000	Screw – SHCS, ¼-20 x ¾” Black	18	00088666000	Panel – Ad Kit, V3D
7	01187612000	Washer – Lock Int/Ext Tooth, ¼”	19	01122290000	Screw - #8-18 x ½” ST FTHD
8	00088569000	PCB – Camera, Hub (Version 2 only)	20	01122364000	Clip – Cable
9	00089124000	Plug – Pipe, 1.187 Dia. Hole	21	01103475000	Screw – Set, 5/16-18 x ¾”
			*	00089310000	Tall Column Kit
			*	00089311000	Short Column Kit



Power, Hub Assembly

REF	PART #	DESCRIPTION	REF	PART #	DESCRIPTION
1	00088562000	Beam Weldment – Camera	11	01122265000	Grommet – Split, 3/8"Groove Dia.
2	00088576000	Cable Assy – Pod Control, W10	12	01177246000	Washer – Lock, Ext. #6
3	00088574000	Cable Assy – Pod Video, W7	13	01101731000	Screw – PHMS, #6-32 x 5/8"
4	00088575000	Cable Assy – Pod Control, W11	14	01101737000	Screw – PHMS, #6-32 x 3/4"
5	00088573000	Cable Assy – Pod Video, W8	15	01177246000	Washer – Lock, Ext. #6
6	01101737000	Screw – PHMS, #6-32 x 3/4"	16	00088567000	Panel, Access
7	00088568000	Power Supply - Beam, Camera	17	01122362000	Plug – Hole, 1 1/4" Dia Hole
8	00088569000	PCB – Camera, Hub (Version 2 only)	18	01122366000	Retainer, Shaft (part of item #28)
9	00088571000	Cable Assy – Console.UMB, W17	19	01185180000	Washer – Lock, Int/Ext 1/4"
10	00088872000	Cable – Power, Camera Beam	20	01122365000	Screw – Captive, Slotted



REMOTE DISPLAY KIT

00088688000 – Remote with 33 ft cable
 00088687000 – Remote only

REF	PART #	DESCRIPTION	REF	PART #	DESCRIPTION
1	00086035000	Bezel, Front, Remote Display	12	00086262000	Cover, Seal
2	00086036000	Panel, Rear, Remote Display	13	01122121000	Grommet
3	00086037000	Pivot Base, Remote Display	14	01101554000	Screw - BHCS, #8-32 X 3/8 HS
4	00088722000	Switch - Membrane, Remote	15	01122106000	Screw - BHCS, #8-32 X 1.0
5	00086179000	Window, LED	16	01101777000	Screw - BHCS, 1/4-20 X 1 1/4 HS
6	00086180000	Hook, Hanger	17	01115607000	Screw - RHMS, #4-40 X 3/4 PHL
7	00081226000	Decal, "JBC"	18	01122109000	Nut - KEPS, #4-40 CD/ZN
8	00086183000	Plate, Cover, Hook	19	01122328000	Magnet, Snap In
10	00086185000	PCB Assembly	20	01122122000	Washer, Flat, .375OD X .171ID N
11	01101740000	Screw - BHCS, #8-32	21	01101609000	Nut, Stop, 1/4-20 UNC-2B CAD
			22	01122110000	Washer, Spring .27 ID X .5
			23	00083327000	Support, Receptacle
			24	01122107000	Washer, Flat Nylon
			25	01122108000	Washer, Flat Nylon
			26	01107381000	Washer, Flat, 1/4 5/8OD X 9/32I
			27	00985268000	Seal Strip, 1/16 X 1/4
			28	00083113000	Cable/Connector Assembly

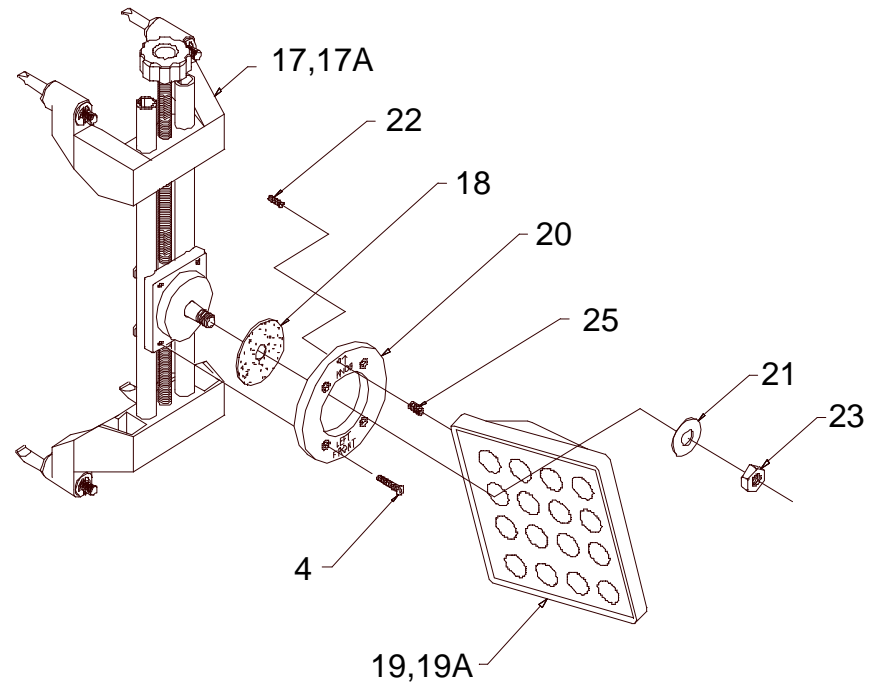
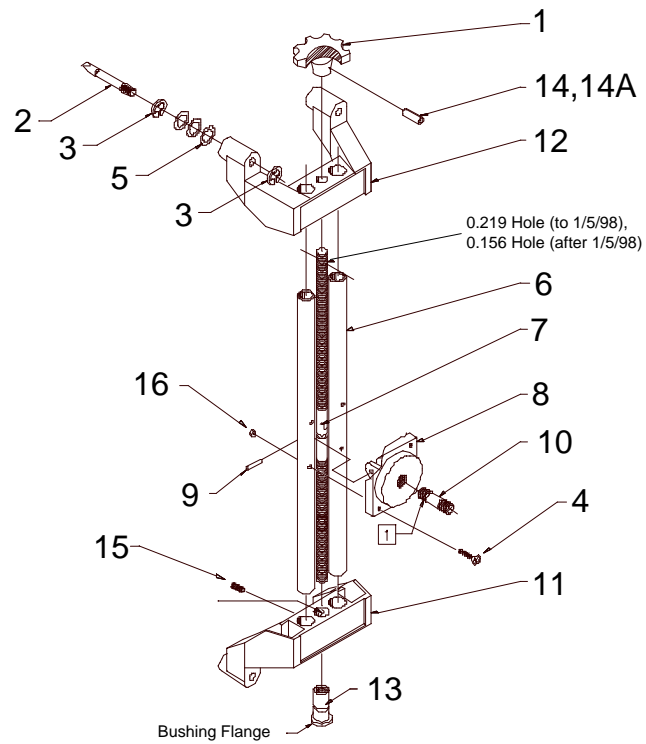
RIM CLAMP & TARGET SET (00088631000 – INCLUDES CLAMPS, TARGETS & ASSEMBLY INSTRUCTIONS)

REF	PART #	DESCRIPTION	REF	PART #	DESCRIPTION
1	00088773000	Knob, Modified	18	00088604000	Disk – Friction
2	00088797000	Rim Claw – Front Clamp, 4 3/8"	19	00088641000	Target Sandwich, Front
	00088794000	Rim Claw – Rear Clamp, 3"	19a	00088642000	Target Sandwich, Rear
	00089568-01	Honda Rim Claw – (short)	20	00088784000	Collar – Front Target
	00089568-02	Honda Rim Claw – (long)	21	01100257000	Washer – Flat, 1/2"
3	01185257000	E-type Retaining Ring, 3/8"	22	01112969000	Screw – Set, 10-32 x 5/8" HS Cup
4	01115245000	Screw – FHMS #10-24 x 2.0"	23	01121511000	Nut – Hex, 1/2-13 UNC 2B CDZ
5	01122464000	Washer – Spring, 3/8" Rod/Screw	25	01122438000	Insert - Brass
6	00088796000	Tube – Support	NS	00088642000	Target Sandwich, Rear
7	00088798000	Lead Screw – Wheel Clamp	NS	00088783000	Collar – Rear Target
8	00088792000	Mount – Spindle	NS	00088793000	Lever – Adjust, Plastic, Rear Target
9	01122493000	Pin – Roll, .187 dia. X 1 1/8"	NS	00088631000	Rim Clamp & Target Set, all 4 pcs.
10	00088605000	Spindle	NS	00088888000	Target & Mount Kit, RHS, 2 pcs.
11	00088800000	Wheel Clamp – Casting, Lower	NS	00088889000	Target & Mount Kit, LHS, 2 pcs
12	00088799000	Wheel Clamp – Casting, Upper	NS	00088761000	R.F. Target & Wheel Clamp Assy.
13	00088801000	Bushing, Internally Threaded	NS	00088762000	R.R. Target & Wheel Clamp Assy.
14	01122456000	Pin – Roll, 7/32 x 1.00" (before 1/5/98)	NS	00088886000	L.F. Target & Wheel Clamp Assy.
14a	01187961000	Pin – Roll, 5/32 x 1.00" (after 1/5/98)	NS	00088887000	L.R. Target & Wheel Clamp Assy.
15	01110770000	Screw – Set, 1/4-20 x 3/8" Cone Point			
16	01177576000	Nut-Stop, #10-24 UNC			
17	00088802000	Front Wheel Clamp – NO TARGET			
17a	00088795000	Rear Wheel Clamp – NO TARGET			

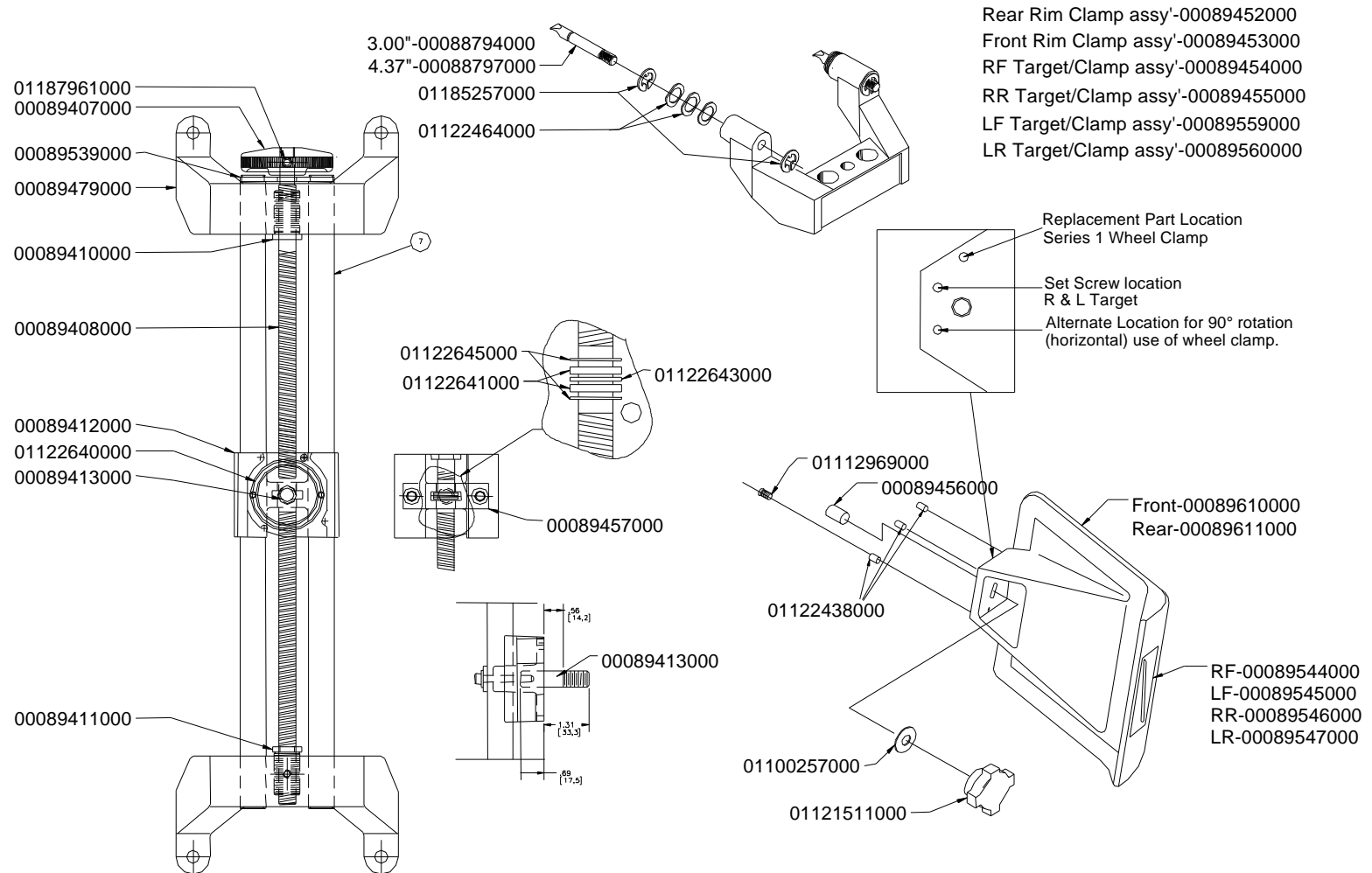
Kits Available

00088940000	Bushing Kit (Does 1 Clamp)
00088939000	Wheel Clamp Hardware Kit (Does all Four)

Version 1 V3D wheel clamp & target assembly



Version 2 V3D wheel clamp & Target Assembly

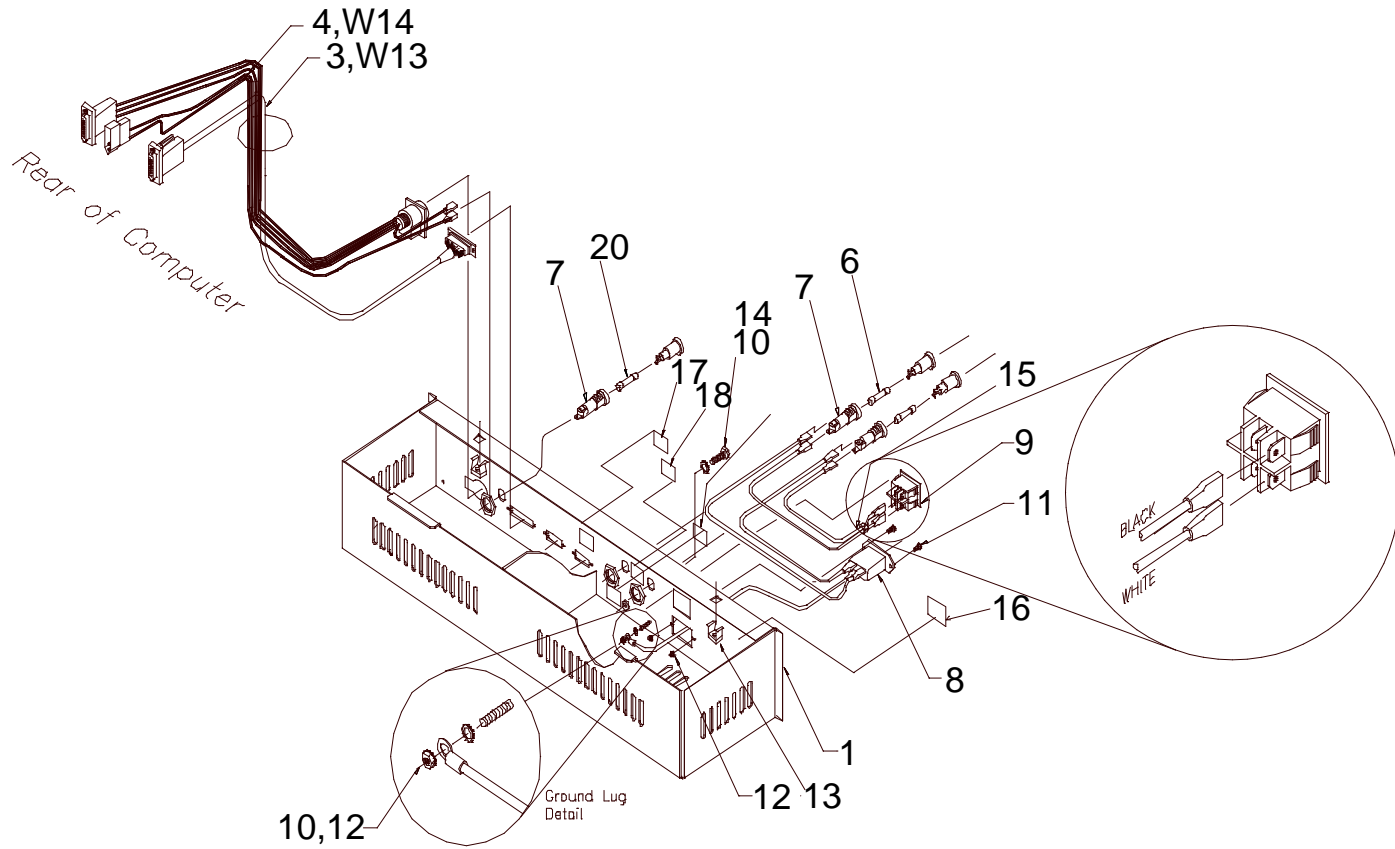


Version 2 V3D wheel clamp & Target Assembly

Part #	Description	Part #	Description
00005727000	INSTR-WHEEL CLAMP ASS'Y,V3D	00089547000	DECAL- REAR, LEFT
00088794000	RIM CLAW-LONG,3.00 1709-01	00089561000	DWG-TARGET MTG ASS'Y-FRONT
00088797000	RIM CLAW-LONG,4.37 1709-02	00089610000	TARGET SANDWICH-FRONT
00089407000	KNOB-MIDIFIED	00089611000	TARGET SANDWICH-REAR
00089408000	SCREW-LEAD,WHEEL CLAMP	01100257000	WASHER-FLAT,1/2
00089410000	INSERT-THREAD,LH	01103184000	SCREW-HHCS, 1/4-20 X 1 1/2 PL
00089411000	INSERT-THREAD,RH	01112969000	SCREW-SET, #10-32 X 5/8 HS CUP
00089412000	MOUNT-SPINDLE,TUBE SUPPORT	01121511000	NUT-HEX, 1/2-13 UNC-2B CAD/ZN
00089413000	SPINDLE-2.00L X .50DIA	01122438000	INSERT-BRASS 240-332
00089452000	RIM CLAMP ASS'Y-REAR,V3D	01122464000	WASHER-SPRING,3/8 ROD/SCREW
00089453000	RIM CLAMP ASS'Y-FRONT,V3D	01122640000	O-RING 1 3/4 X 2 1/8 X 3/16DIA
00089456000	BEARING- TARGET, FRONT/REAR	01122641000	WASHER-THRUST,1/16T X1/2IDX3/4
00089457000	PLATE-COVER,LEAD SCREW	01122642000	SCREW-1/4-20 X 1/4 NYLON TIP
00089479000	WHEEL CLAMP-MACH. CASTING	01122643000	RING-SNAP ROTOR CHIP RE-50
00089538000	DWG-RIM CLAMP ASS'Y,V3D	01122645000	WASHER-STEEL,.745OD X .510ID
00089539000	TUBE ASS'Y-ROD RETENTION PLATE	01185257000	RING-RETAINING
00089544000	DECAL- FRONT, RIGHT	01187612000	WASHER-LOCK INT/EXT, 1/4 ZN
00089545000	DECAL- FRONT, LEFT	01187961000	PIN-ROLL, .156 X 1 ESNA
00089546000	DECAL- REAR, RIGHT		

INPUT / OUTPUT BOX ASSEMBLY (00089157000)

REF	PART #	DESCRIPTION	REF	PART #	DESCRIPTION
1	00088581000	Box – I.O.	13	01101802000	Nut – Captive, ¼-20
3	00088603000	Cable Assy, Console CoProcessor	14	00083558000	Screw-ground - #8x32-3/4 (green)
4	00089164000	Cable Assy, Remote Display	15	00088279000	Cable Assy – Main Fuse / Switch
6	00074120000	Fuse, Slo-Blo – 8A	16	00086465000	Label – Warning, Shock Hazard
7	00085547000	Holder, Fuse – Panel Mt. VDE	17	00086164000	Label – Fuse
8	00085661000	Cable Assy – Power, Main Jack	18	00088270000	Label – Fuseholder, 8 Amp
9	00083048000	Switch, ON / OFF	19	00088381000	Label – Frame or chassis, Ground
10	01187931000	Washer – Ext. Tooth #8	20	00074208000	Fuse, Slo-Blo – 3A
11	01101883000	Screw – 8x32-3/8” ST	NS	00089160000	Multiple Display Kit
12	01181298000	Nut – Keps			

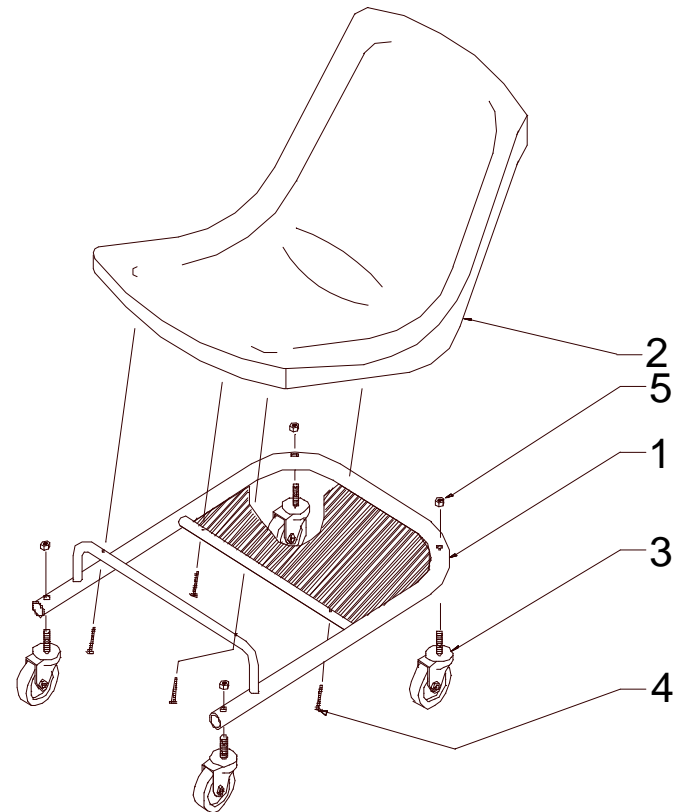


SCOOTER ASSEMBLY (00088634000)

REF	PART #	DESCRIPTION
1	00088760000	Scooter Frame
2	01122415000	Seat – Bucket, Molded Plastic
3	01122416000	Caster – Swivel, 1 3/4"
4	01122570000	Screw – 5/16 x 18 x 1/2 Hex
5	01120240000	Nut – Stop, 3/8-16

00089163000 ACCESSORY KIT

00000096000	Brake pedal depressor
00088620000	Inner Wheel Chock
00088621000	Outer Wheel Chock
00055502000	Steering wheel clamp holder
00088690000	Remote Control
01122063000	Battery- AA 1.5V Alkalyne
00089219000	Literature Pack
00089355000	Inner Pack- Acc'y V3D



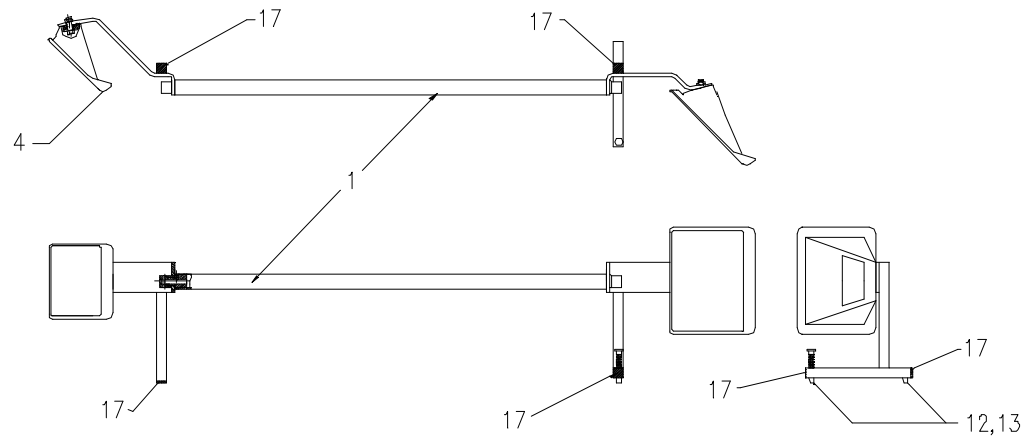
CALIBRATION ADAPTER KIT (00089612000)

REF	PART	DESCRIPTION	REF	PART	DESCRIPTION
1	00089203000	Calibration Bar Weldment, V3D	15	01100266000	Washer – Flat, 5/8”
3	00089611000	Target Sandwich – Rear	16	01121513000	Nut – Hex, 5/8-11 UNC
4	00089610000	Target Sandwich – Front	17	01122491000	Plug – Poly, Black (Fits 1.12” ID)
6	00088853000	Shaft – Foot Adjustment	N/S	00088616000	Installation Assy. Template, V3D
9	01122370000	Knob - #10-24 (Female Thread)	N/S	00088623000	3/8” Hex Lock Nut Tool
10	01122372000	Spring - Compression	N/S	01122380000	Screwdriver, 8”
11	01122373000	Washer – Shoulder	N/S	01112969000	Set Screw, #10-32x5/8” HS CUP
12	01122379000	Bumper–Rubber, Recessed 1.00x5/8	N/S	01122438000	Insert – Brass
13	01112276000	SHCS - #10-24 x .38” long	N/S	01122571000	Pin-Coiled spring, 1/16x3/4”
14	01100355000	HHCS – 5/8-11 UNC x 1 ½”			

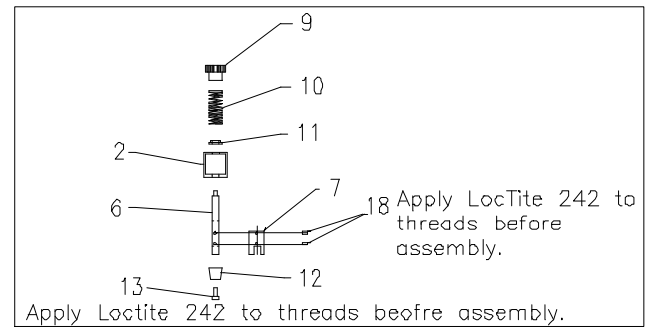
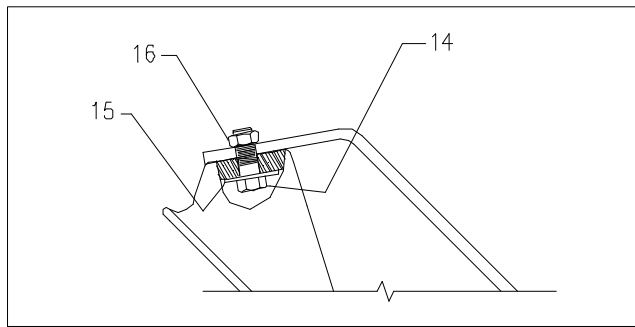
CALIBRATION BAR ASSEMBLY INSTRUCTIONS

The 00089612000 Calibration Adapter Kit provides extreme rigidity in a lightweight welded aluminum fixture. FST’s may use the standard JBC V3D Target assemblies with this bar to calibrate a V3D Image Aligner. To assemble this kit, follow the steps below.

- Install the Calibration Adapter Kit Target on the calibration bar. These targets bolt in place. A small setscrew is located in each target above the mounting bolt. Unscrew it until it protrudes 1/4” to 3/8”. This screw acts as a locator pin to ensure the target is mounted on the fixture at the proper angle.
- Insert the hole plugs into the square tubing (if already in place disregard this instruction).
- Assemble the tilting leg (if already in place disregard this instruction).
- Ensure all bolts are tight. The fixture is now ready for use.

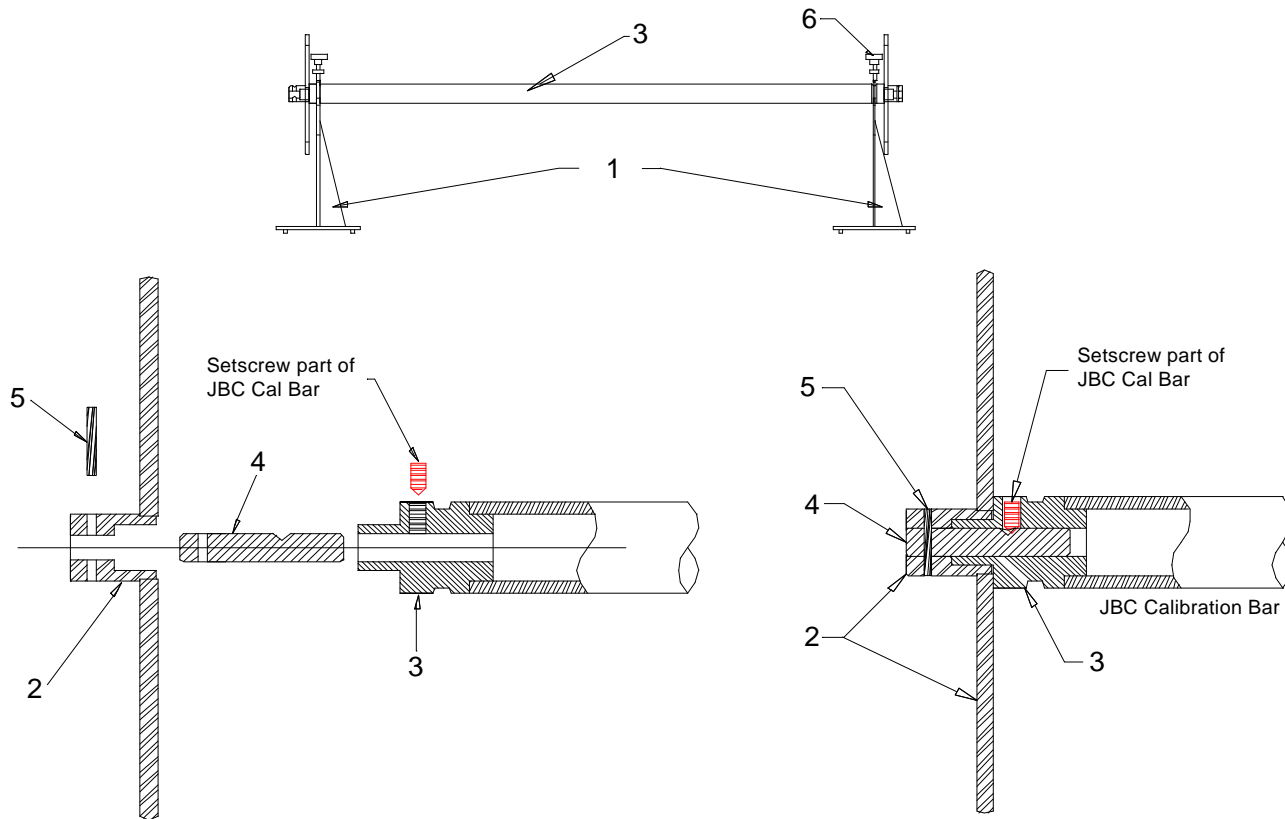


Apply Loctite 242 to threads before assembly.



Apply Loctite 242 to threads before assembly.

Apply Loctite 242 to threads before assembly.

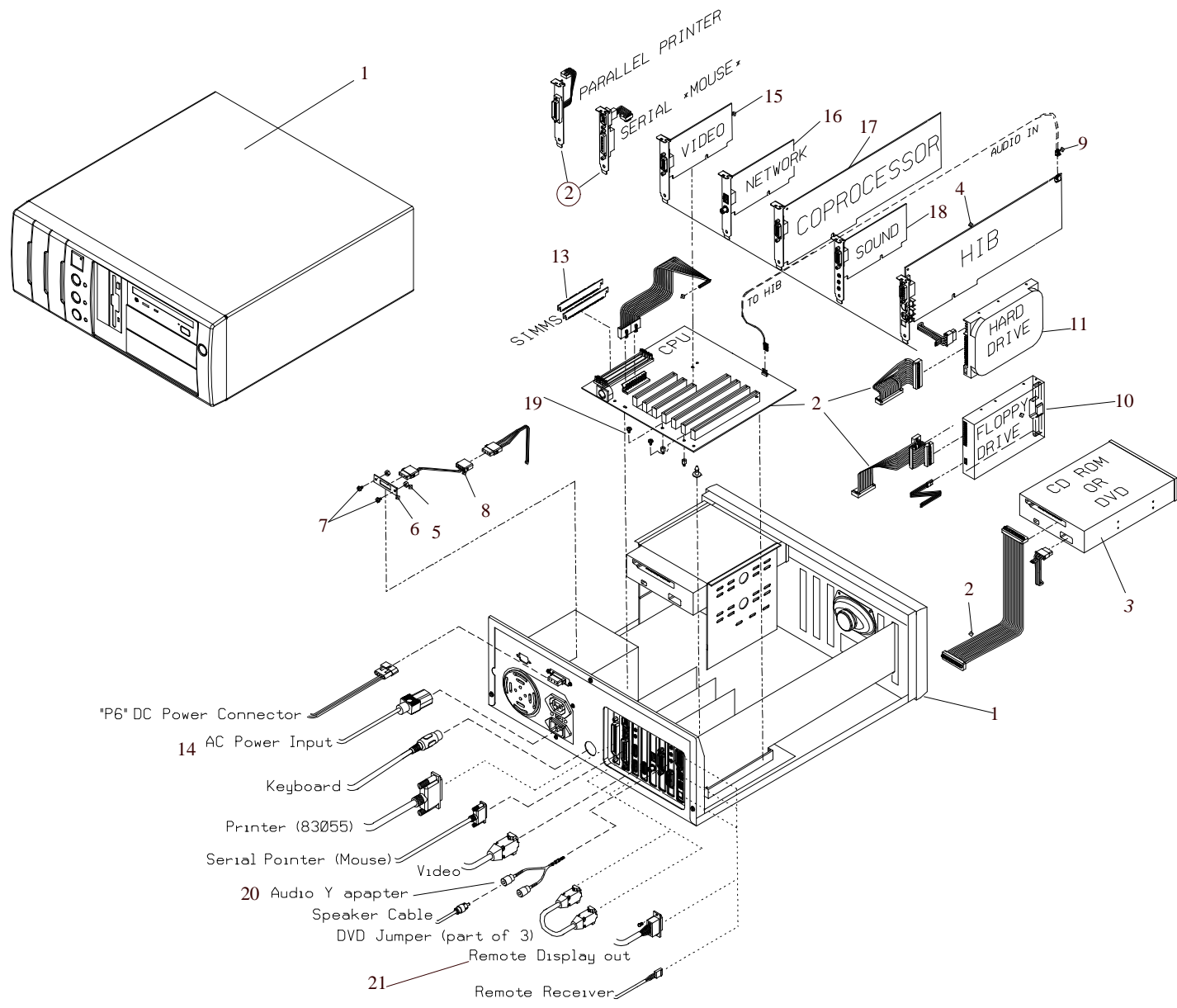


CALIBRATION CHECK ASSEMBLY (EAA0256J00A)

REF	PART	DESCRIPTION
1	00084102000	Stand – Calibration
2	EAA0256J01A	Adapter, Rim Clamp
3	00063696000	Calibration Bar, JBC
4	00088856000	Shaft, Calibration Bar
5	01122490000	Roll Pin, 3/16 x 1 ½”
6	00083258000	Screw Assy – Clamp, Head Lock

COMPUTER COMPONENTS

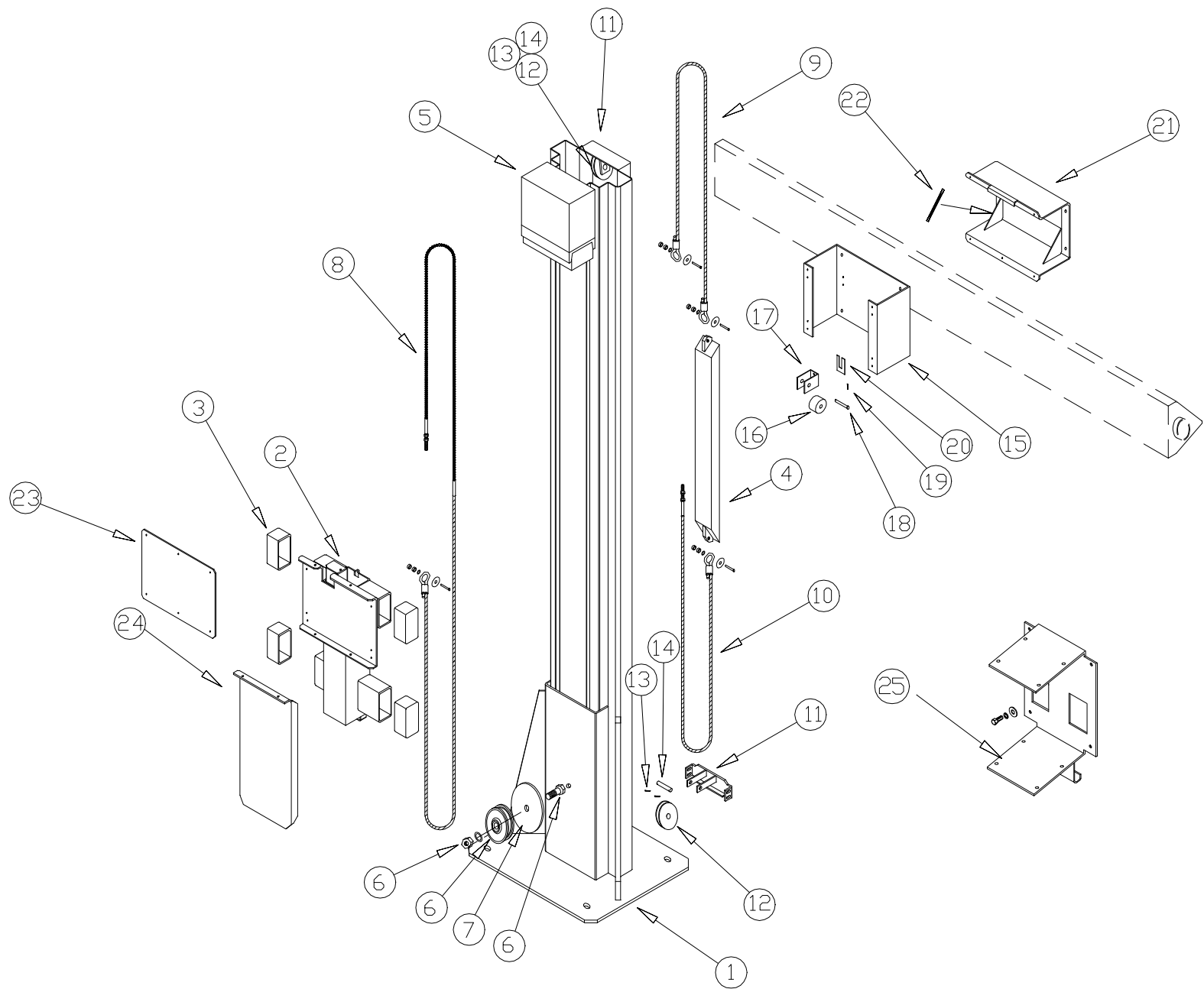
REF	PART #	DESCRIPTION	REF	PART #	DESCRIPTION
1	00088290000	Case assy./ Desktop with pwr supply "AT"	15	00089487000	Video Card, **USE WITH ATX Main PCB*
*	00085529000	Power Supply AT	*	00088277PCI	Video Crd-1MEG PCI
	00089489000	Case assy' Desktop with Fan "ATX"	16	*00089291000	Network Card
	00089490000	Power supply ATX, 230W	17	00088777000	Co-Processor PCB
2	*00088726000	Motherboard Assy, Pentium X 64M	18	00088839000	Sound Card-16 Bit
*	00088723KIT	Motherboard with VGA Card	19	01122049000	Screw, Self Tap #6-32 X 3/8"
*	00089486000	ATX Motherboard	20	00088842000	Cable Assy.- Audio Adapter
3	00089715000	Drive Kit-DVD Player	21	00089164000	Cable Assy.- HIB/Interconnect
*	00086866000	Drive, CD ROM- Kit, single disk	*	00088282000	Software-Win.95 CD.
4	00088252000	HIB-PCB-Head Interface Windows V9	*	00088281000	Software-Win.95 (Start-up)
5	01101532000	Screw-PHMS, #6-32 X 3/8 PHL	*	00089438000	Software-Win 98 CD "Recovery"
6	00085549000	Bracket- Connector, 12VDC	*	0008917600X	Software-PRO32™ V3D***
7	01101760000	Nut-Keps, #6-32 UNC-2B CD/ZN	**	00089172000	Disk-DVD Setup WIN95, Creative
8	00085377000	Pwr. Supply Cable Assy.-Three Wire		00089396000	Creative DVD startup diskette
*	01122625000	Cable-IDE 40 pin, 18" - dual	*	00089398000	Disk-DVD Setup WIN98, SONY
10	00086016000	Drive-Floppy, 144MB, 3.5"		00089398000	SONY DVD startup diskette
11	00085372000	Hard Disk Drive, 3 ½ IDE	*	01110594000	Screw-RHMS,4-40 X 3/16 ZN
*	00085591000	Cover, Floppy Slot	*	00086432000	Disk Kit-Floppy, Formatted
*	00085590000	Cover, CD Slot	*	00089226000	Software, Mitchell Under-Car
12	00085737000	Power Splitter Cable	*	00089280000	Update Kit – Pro32™, 0008917600X
13	Memory Modules		*	00086804000	Label, Function Keys
	00089167000	32Meg Memory Module-4mx64,100mhz	**	00086696000	Track Pad-Only
	00088841000	16 Meg Simm Memory Module-72 Pin	**	00086797000	Track Ball- Only
	00085334000	8 Meg Simm Memory Module-72 Pin	**	00086798000	Light Pen-Only
	00085333000	4 Meg Simm Memory Module-72 Pin	**	00086799000	Track Pad- Only
14	00085639000	Power Cord (115v)	**	00086796000	Mouse Kit- Only



CAMERA BEAM ASS'Y-MOVABLE 115-VOLT 00089227000
CAMERA BEAM ASS'Y-MOVABLE 230-VOLT 00089228000

REF	PART #	DESCRIPTION	REF	PART #	DESCRIPTION
1	JBC4063201	Main Tower	19	JBC60267	Cotter Pin
2	JBC4063301	Slide Beam	20	JBC61900	Shim
3	JBC20772	Glide Bearing	21	JBC3067901	Beam Mount
4	JBC2151701	Counterweight	22	JBC61923	Extruded Rubber (6")
5	JBC61665	Operator (power unit)	23	JBC2121401	Beam Mount Plate
6	JBC61921	Kit: bolt, pulley, f/w, nut	24	JBC3071101	Beam Slide Cover*
7	JBC61922	Pulley Retainer Washer	25	JBC00778000	Camera Beam Bracket Kit
8	JBC61923	Operator (chain / cable)	N/S	JBC61886	Hand Held Remote
	JBC61920	Operator (chain / cable) <small>OLD</small>	N/S	00088909000	Kit, Pod Guard
9	JBC21509	Top Tension Cable Assy.	N/S	00088906000	Pod Guard weldment – Pit
10	JBC21510	Btm. Tension Cable Assy	N/S	00040348000	Cord – Power, Fan Long
11	JBC2149601	Pulley Mount Bracket	N/S	00089208000	Cord – Power, IEC M-F, 12' long
12	JBC61819	Nylon Pulley	N/S	00110749000	Anchor-Wedge, 3/8 x 3"
13	JBC60267	Cotter Pin	N/S	00110748000	Anchor-Wedge, 3/8x5" (OPTIONAL)
14	JBC11839	Pulley Pin	N/S	00111660000	Cable Tie
15	JBC3071001	Cradle	N/S	00069723000	Shim – Lift, 1/16" thick
16	JBC61821	Wheel	N/S	00069722000	Shim – Lift, 1/8" thick
17	JBC2151401	Roller Bracket	N/S	00088671000	Camera Beam Assembly (Ref. Only)
18	JBC11836	Roller Pin	N/S	00089124000	Plug – Tube, 1.25" OD, Blk.

* Item 24 – Beam Slide Cover – an additional piece may be purchased and mounted above Item 2 – Slide Beam. One piece must remain below Item 2 to comply with OSHA regulations. Sufficient space must exist between item 24 and the closed welded back of the main tower.





USA

John Bean
309 Exchange Avenue
Conway, Arkansas 72032
Tel.: (800) 362-8326 or (501) 450-1500
Fax: (501) 450-1585

FRANCE

John Bean
Snap-On Equipment France
Z.A. Du Vert Galant
15, rue de la Guivernone
BP 7175
95310 Saint Ouen L'Aumone
Tel: (33) 1-3448-5878
Fax: (33) 1-3448-5879

UNITED KINGDOM

Snap-On Equipment Ltd.
John Bean Equipment Group
Old Meadow Road
Kings Lynn
Norfolk
PE30 4WJ

CANADA

John Bean
6500 Millcreek Drive
Mississauga, Ontario
Canada L5N 2W6
Tel: (905) 814-0114
Fax: (905) 814-0110

GERMANY

John Bean Auto Service Gerate
Division to Sun Electric Deutschland
Gewerbepark Sinn
D-35764 Sinn Herborner Str. 7-9
Tel: (49) 2772-9404-0
Fax: (49) 2772-94042-23

LATIN AMERICA

Snap-On Tools International, Ltd.
2801 80th Street
Kenosha, WI 53143
Tel: (262) 656-5003
Fax: (414) 656-1403

Notice: The information contained in this document is subject to change without notice. **John Bean** makes no warranty with regard to this material. **John Bean** shall not be liable for errors contained herein or for incidental consequential damages in connection with furnishings, performance, or use of this material.

This document contains proprietary information which is protected by copyright and patents. All rights are reserved. No part of this document may be photocopied, reproduced, or translated without prior written consent of **John Bean**.



is a registered trademark of the John Bean and Snap-on Incorporated