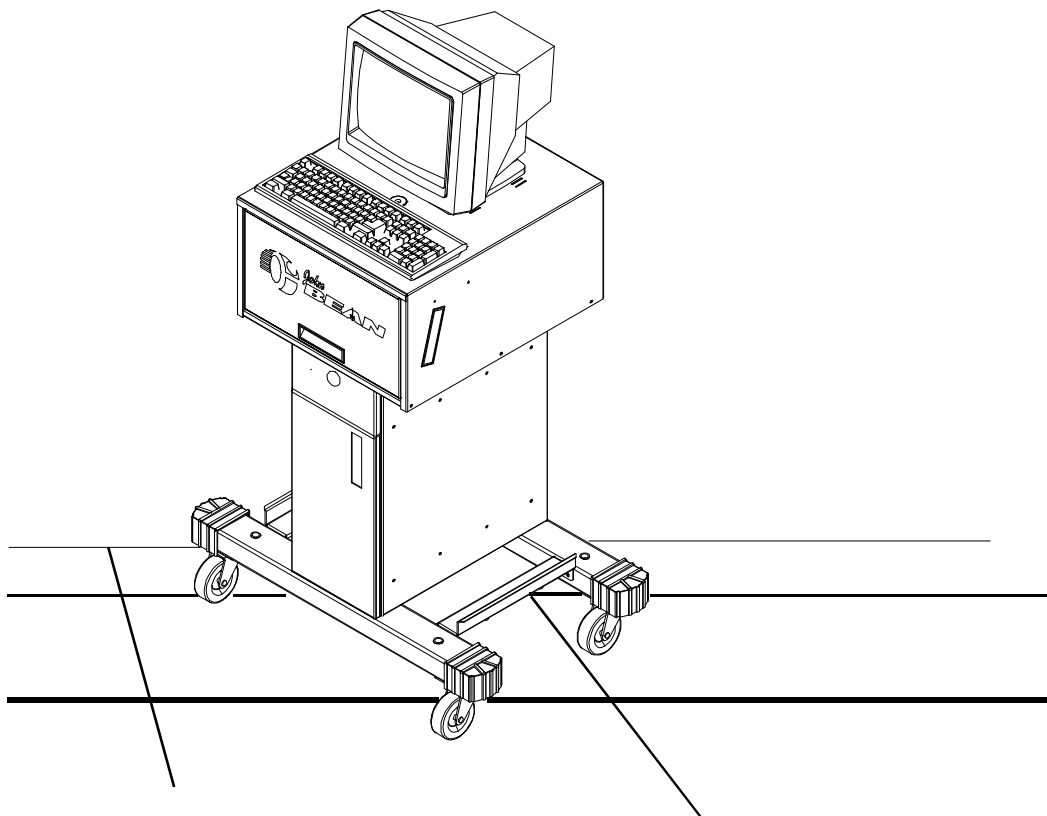


Visualiner Series Model V5

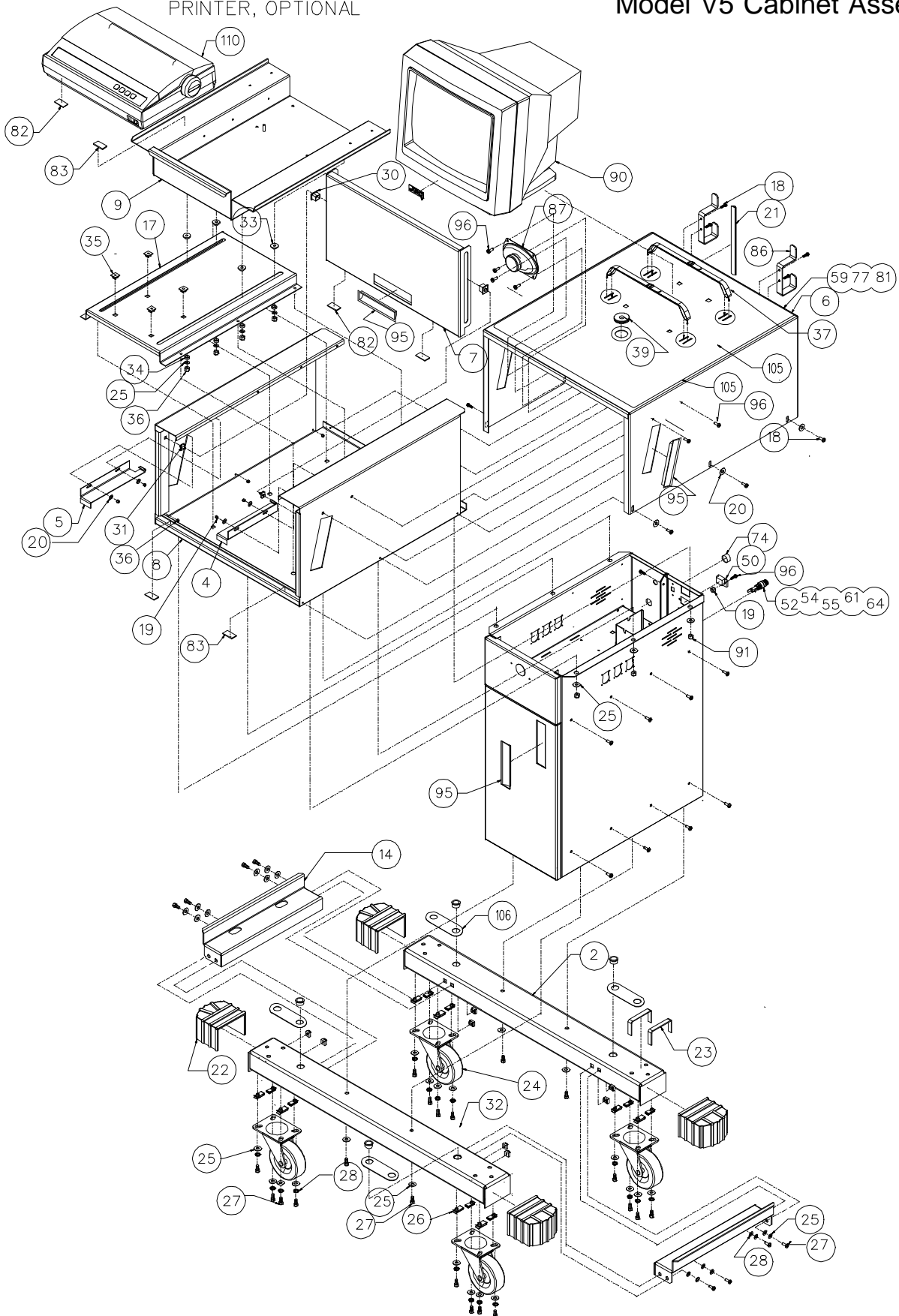


V5 Cabinet Parts Reference

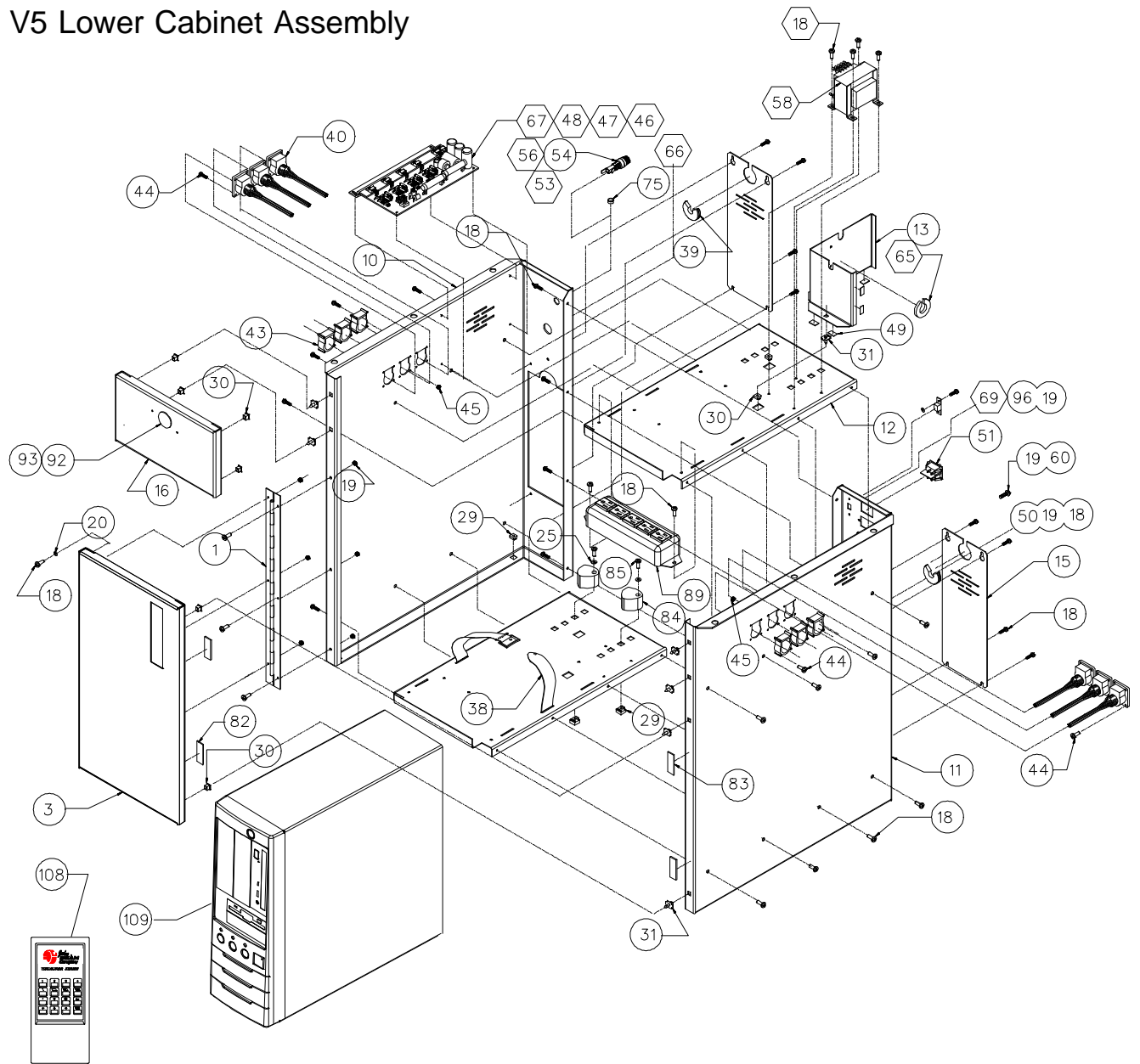
FORM 5650

PRINTER, OPTIONAL

Model V5 Cabinet Assembly



V5 Lower Cabinet Assembly



<u>REF#</u>	<u>QTY</u>	<u>PART NUMBER</u>	<u>DESCRIPTION</u>
1	1	00085761000	Hinge - Lower Door
2	2	00088151000	Beam - Caster
3	1	00088713000	Panel - Front
4	1	00088819000	Bracket - Support, Door Rh
5	1	00088820000	Bracket - Support,Door Lh
6	1	00088822000	Enclosure - Main,Top
7	1	00088824000	Door - Printer
8	1	00088821000	Enclosure - Main, Bottom
9	1	00088825000	Tray - Paper, Printer
10	1	00088715000	Panel - Side,Lh
11	1	00088714000	Panel - Side, Rh
12	2	00089268000	Panel - Support
13	1	00088823000	Cover - Shield
14	2	00088828000	Bracket - Head Support
15	2	00088829000	Plate - Cover
16	1	00089187000	Cover - Service, Elect.
17	1	00088826000	Shelf - Printer, Slide
18	39	01122604000	Screw - Self Tap, #8x3/8 Tb Blk
19	22	01181298000	Nut - Keps, #8 - 32 Unc - 2b Cd/Zn
20	13	00061746000	Washer - Tray, Weight
21	1	01101891000	Duct - Latching, Pandiut 1/2 x 1
22	4	00088175000	Endcap - Caster Beam,V9
23	5ft	01122302000	Tape - Foam,Adhesive - 7598a41
24	4	00063590000	Caster - Swivel, 4"
25	36	01101930000	Washer - Flat, 1/4 Blk Oxide
26	16	01101800000	Nut - 1/4 - 20, Type U
27	28	01101988000	Screw - Self Tap, 1/4 - 20 x 3/4
28	24	01100241000	Washer - Lock Spring,1/4
29	14	01101802000	Nut - Tinnerman, 1/4 - 2
30	10	01122472000	Receptacle - Nylatch
31	10	01122473000	Stud - Push In, Black
32	4	01122482000	Bushing - Nylon
33	4	01122476000	Washer - Nylon, Shoulder
34	4	01122477000	Washer - Nylon, Flat
35	4	01122287000	Nut - Square, Nylon
36	4	01101609000	Nut - Stop, 1/4 - 20 Unc - 2b Cad
37	2	01122312000	Strap - Cinch 1" x 24"
38	1	01122285000	Strap - Cinch, 48" Lg
39	3	00083182000	Grommet - Rubber, Power Cord
40	1	00086982000	Connector Harness - Heads to HIB
41	1	00088391000	Label - Warranty Agreement
43	6	00083327000	Support - Receptacle (alum/Extru)
44	24	01122323000	Screw - Phms, 4 - 40x1.
45	24	01122109000	Nut - Keps, #4 - 40 Cd/Zn
46	4	01122605000	Screw - Pms,6 - 32 x 3/8 (Blk)
47	4	01101760000	Nut - Keps, #6 - 32 Unc - 2b Cd/Zn
48	4	01122230000	Standoff - Brass #6 M/Fm,.5
49	.5 Ft	01122343000	F1 Pad - Rubber, 1" Blk W/Adh Back
50	1	00085661000	Cable Assembly - Power
51	1	00083048000	Switch - On/Off
52	2	00074120000	Fuse - Slow Blow, 8.00a 250v
53	1	00074105000	Fuse - Slow Blow, 1.00a 250v
54	3	00085547000	Holder - Fuse, Panel Mount Vde
55	1	00086164000	Label - Fuse
56	1	00088278000	Label - Fuse Holder, 1.0 Amp
57	2	00111245000	Label - Caution, Elect

<u>REF#</u>	<u>QTY</u>	<u>PART NUMBER</u>	<u>DESCRIPTION</u>
58	1	00086967000	Transformer - 115 - 230 Volt,Ir
59	1	00111631000	Label - Frame Or Chassis Terminal
60	1	00083558000	Screw - Ground, #8 - 32 x 3/4 Grn
61	1	00074208000	Fuse - Fast Blow, 3.00a 250v
62	1	00088271000	Label - Fuse Holder, 3 Amp
63	1	00088279000	Cable Assembly - Main Fuse/Sw
64	1	00088270000	Label - Fuse Holder, 8 Amp
65	1	01122217000	Grommet - 7/8 Od x 1/2 Id
66	1	00086979000	Cable Assembly - Charging
67	1	00085357000	Pcb Assembly - Charger, Battery
68	1	00086968000	Cable Assembly - Transformer To Pcb
69	1	00088299000	Switch Assembly - 115/230v
70	1	00088297000	Cable Assembly - Jumper
71	1	00088298000	Cable Assembly - Jumper
72	1	00088296000	Cable Assembly - Jumper, F4b - T4
76	1	00111243000	Label - Warning, Explosion
77	1	00089379000	Label - Electrical/Serial
78	1	00085702000	Label - Voltage, 115v
79	1	00085703000	Label - Caution, Voltage 230v
80	1	00086465000	Label - Warning, Shock
81	1	00085595000	Label - Warning/Patent
82	1.3 Ft	01101868000	Tape - Hook Velcro, 1" #88
83	1.3 Ft	01101869000	Tape - Loop Velcro, 1" #100
84	2	00088173000	Cam Lock - Pc
85	2	01101882000	Screw - Phms, 1/4 - 20 x 1 1/2 P
86	2	00084269000	Bracket - Hook
87	1	00085568000	Speaker Assembly
*	1	00085689000	Phono Cable
89	1	00088624000	Strip - Power, International
90	1	00088424000	15" CRT Monitor, Color
91	6	01101540000	Nut - Keps, 1/4 - 20 Unc - 2b Cd/Zn
92	1	01122296000	Snap Bushing #2198
93	1	00088179000	Window - Remote V9
	1	00088197000	Remote Receiver Assembly with cable
94	1	00089290000	Connector Assembly - 4 Pin,.156
95	4	00083683000	Pocket - Drawer Pull, P2 - 52
96	20	01122127000	Screw - Phms, #8 - 32 x 3/8 Phl Bl
98	1	00088635000	Power Cord - 3 Cond lec - 301 3 Ft long
99	2	00089267000	Cord - Power, lec 320,M - F, 6 Ft long
*	1	00088872000	Power Cord, 110V Main, from cabinet to wall outlet
*	1	00085655000	Power Cord, 220V Main, from cabinet to wall outlet
100	1	00089153000	Cable Assembly - Hib/Interconnect
101	1	00089269000	Cable - Db15, Ext
102	1	00089162000	Cable Assembly - Hib Power
103	1	00088636000	Cable Assembly - Power
104	1	00085718000	Standard Keyboard Kit
105	1	00089257000	Matt - Protective, Black
106	4	00085347000	Mat - Protector - Small
107	5	01122314000	Tie Wrap - Push Button
108	1	00081225000	Remote Controller
109	1	00088729000	PC Assembly - CD only
110	1	00086018000	Printer - 115V
*		00086019000	Printer - 230V
*	1	00088346000	6 Sensor Head Kit
*	1	00088347000	8 Sensor Head Kit
*	1	00086127000	Calibration Kit
*	1	00089284000	Keyboard Cover



John
BEAN™
Company

USA

John Bean Company
309 Exchange Avenue
Conway, Arkansas 72032
Tel.: (800) 362-8326 or (501) 450-1500
Fax: (501) 450-1585

FRANCE

John Bean Company
Snap-On Equipment France
Z.A. Du Vert Galant
15, rue de la Guivernone
BP 7175
95310 Saint Ouen L'Aumone
Tel: (33) 1-3448-5878
Fax: (33) 1-3448-5879

IRELAND

Snap-On Equipment Europe Ltd.
Bay 99
Industrial Estate,
Shannon
Co. Claire, Ireland
Tel: (353) 6147-1300
Fax: (353) 6147-2556

CANADA

John Bean Company
6500 Millcreek Drive
Mississauga, Ontario
Canada L5N 2W6
Tel: (905) 814-0114
Fax: (905) 814-0110

GERMANY

John Bean Auto Service Gerate
Division to Sun Electric Deutschland GmbH
Gewerbepark Sinn
D-35764 Sinn Herborner Str. 7-9
Tel: (49) 2772-9404-0
Fax: (49) 2772-94042-23

LATIN AMERICA

Rua Apinages
1268 cj. 605B
Perdizes-Sao Paulo-S.P.
Cep: 05017-0000
Brazil
Tel: (55) 11-871-0713
Fax: (55) 11-871-0713

Notice: The information contained in this document is subject to change without notice. **John Bean Company** makes no warranty with regard to this material. **John Bean Company** shall not be liable for errors contained herein or for incidental consequential damages in connection with furnishings, performance, or use of this material.

This document contains proprietary information which is protected by copyright and patents. All rights are reserved. No part of this document may be photocopied, reproduced, or translated without prior written consent of **John Bean Company**.

John
BEAN is a registered trademark of the John Bean Company and Snap-on Incorporated